

Automated ELISA & CLIA Programmable Analyzer

| | |
|---------------------------------------|---|
| Min. and Max. volume | 2 µL - 1.95 mL |
| Precision for volumes <5 µL | <2.5% CV |
| Precision for volume >5 µL | <1% CV |
| Maximum number of specimens | 96 (including calibrators and controls) |
| Maximum number of reagents | Typically 27 or 44 |
| Standard reagent rack | 27 positions, other configurations optional |
| Reaction vessel | Standard 96 well microwell plates or strips |
| Instrument bottles | 1 L Priming bottle 2 L wash 1 L rinse (or second wash) 2 L waste bottle |
| Thermal control | Plate/Well 25 °C, 37 °C, or ambient temperature Temperature controlled to 25 °C providing the ambient room temperature is below 25 °C |
| Wash head | 8-probe, automatic prime and rinse |
| Programs | Wash protocols are user programmable for aspirate, dispense, soak, mix |
| Reading | Glow luminescence & absorbance |
| Light Source | Halogen Lamp |
| Spectral range | 340 - 700 nm |
| ELISA absorbance | 405, 450, 492, and 630 nm |
| Photometric accuracy | ± (1% of the reading +0.005A from 0 to 1.5A) ± (2% of the reading from 1.5 to 3.0A) |
| Software format | CD-ROM and Internet upgrades |
| Supported operating systems | Windows® 7, 8 and 10 |
| Minimum system requirements | Operating System dependent* please see Windows® system requirements |
| Calculation modes | Absorbance, single standard, factor, multi-calibrator point-to-point, linear regressions, log-logit, cubic spline, and nonlinear regressions (curve fit), RLU |
| LIS integration | LIS compatible, patient database stores test results |
| Dimensions & weight | 66 cm W. x 51 cm L. x 40 cm H. Approx. weight = 35 kg 34" W. x 20" L. x 16" H. Approx. weight = 77 lbs |



Awareness Technology, Inc. USA & INTERNATIONAL:
1935 S.W. Martin Hwy., Palm City, FL 34990, USA
tel.: +1 772 283 6540, fax: +1 772 283 8020
info@awaretech.com

Awareness Technology, Inc. EUROPE:
Franz-Siegel-Gasse 1, 2380, Perchtoldsdorf, Austria
tel.: +43 (1) 804 81 84, fax: +43 (1) 804 81 85
info@awaretech.eu

Awareness Technology, Inc. ASIA & AFRICA
Q3-146, SAIF Zone, 120543, Sharjah, United Arab Emirates
tel.: +971 (06) 557 80 58, fax: +971 (06) 557 80 59
info@awaretech.com

ISO 13485:2003



314800 03/2016 REV.1

www.awaretech.com

Programmable Open System

ChemWell® Fusion

Automated ELISA & CLIA Analyzer



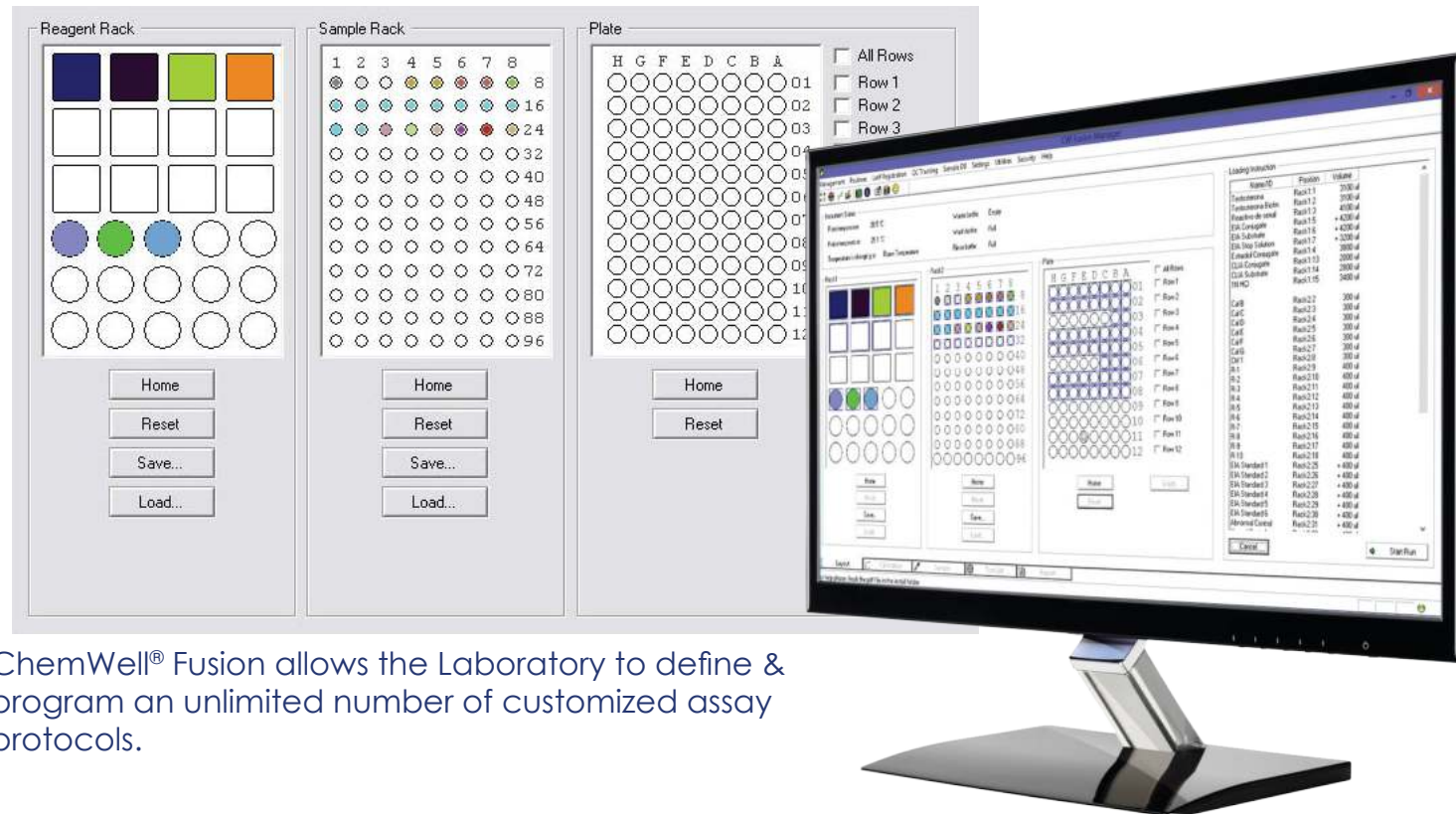
Deliver Results With Confidence

- Accurate results, dependable performance
- Automated analyzer for microwell based ELISA or CLIA
- Versatile open system
- Cost-effective operation

AWARENESS
TECHNOLOGY, INC.

The ChemWell® FUSION Advantage

- Ease of operation through intuitive design
- Integrated precision pipetting & microwell plate washing
- The ability to run both ELISA & CLIA on the same microwell strip plate
- Intelligent software that prevents timing conflicts
- Complete patient database with search and history tracking system
- Flexible reporting options including export to excel or LIS
- Customizable reagent and sample placement offering flexibility
- An open system, with the ability to program any assay Lockout security protection options
- Simplified maintenance



ChemWell® Fusion allows the Laboratory to define & program an unlimited number of customized assay protocols.

Three easy steps to reliable results

1. Enter or download patient data, request test with calibration and QC options.
2. Load samples and reagents.
3. ChemWell automatically processes the workload, monitoring reagent and sample supply, and presents results for review, printing and storage.



Processes CLIA and ELISA assays on the same microwell plate or run full plates for dedicated testing

- ChemWell Fusion is an open system adaptable to ELISA and glow-type CLIA applications.
- ChemWell Fusion provides pre-dilution options, mixing, variable incubation, plate washing, total pipetting functions, the software times the addition of conjugates, substrates and stop solutions while monitoring sample and reagent volumes as well as other parameters to assure precise, reliable results.
- ChemWell Fusion is a fully automated immunoassay processor with a unique optical system that automatically reads both colorimetric and chemiluminescent assays.
- The instrument holds a 96 microwell plate or up to twelve 8-well strips.
- Each row in a microwell plate can run a different test even if the incubation times, wash cycles, and read modes are different. Smart software avoids timing conflicts.
- Assay applications can be programmed to create and store password protected menu of test protocols.

Reagent Rack - Accommodates 27 reagent bottles of various sizes

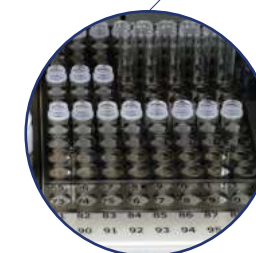
Sample Rack - 96 samples may be loaded

Reaction Chamber - Light-tight microwell plate reaction chamber for processing both CLIA and ELISA assays

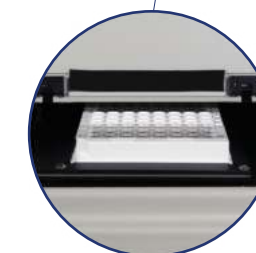
Plate Washer - 8 manifold wash head provides on-board plate washing capability



Reagent Rack



Sample Rack



Reaction Chamber

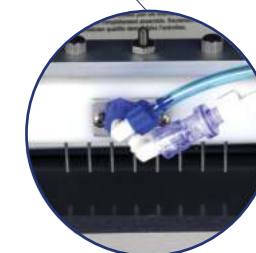


Plate Washer