

Automated ELISA & Chemiluminescence Programmable Analyzer

Min. and Max. volume	2 µL - 1.95 mL
Precision for volumes <5 µL	<2.5% CV
Precision for volume >5 µL	<1% CV
Maximum number of specimens	96 (including calibrators and controls)
Maximum number of reagents	Typically 27 or 44
Standard reagent rack	27 positions, other configurations optional
Reaction vessel	Standard 96 well microwell plates or strips
Instrument bottles	1 L Priming bottle 2 L wash 1 L rinse (or second wash) 2 L waste bottle
Thermal control	Plate/Well 25 °C, 37 °C, or ambient temperature Temperature controlled to 25 °C providing the ambient room temperature is below 25 °C
Wash head Programs	8-probe, automatic prime and rinse Wash protocols are user programmable for aspirate, dispense, soak, mix
Reading	Glow luminescence & absorbance
Light Source	Halogen Lamp
Spectral range	340 - 700 nm
ELISA absorbance	405, 450, 492, and 630 nm
Photometric accuracy	± (1% of the reading +0.005A from 0 to 1.5A) ± (2% of the reading from 1.5 to 3.0A)
Software format	CD-ROM and Internet upgrades
Supported operating systems	Windows® 7, 8 and 10
Minimum system requirements	Operating System dependent* please see Windows® system requirements
Calculation modes	Absorbance, single standard, factor, multi-calibrator point-to-point, linear regressions, log-logit, cubic spline, and nonlinear regressions (curve fit), RLU
LIS integration	LIS compatible, patient database stores test results
Dimensions & weight	92.075 cm W. x 54.61 cm L. x 47.3075 cm H. Approx. weight = 35 kg 36.250" W. x 21.500" L. x 18.625" H. Approx. weight = 77 lbs (Allow additional 6" W for waste and wash containers)

 **AWARENESS**
TECHNOLOGY, INC.
www.awaretech.com

Awareness Technology, Inc. USA & International
tel: +1 772 283 6540 fax: +1 772 283 8020

Awareness Technology, Inc. Europe
tel: +43 (0) 2236 892465 fax: +43 (0) 2236 892464

Awareness Technology, Inc. Asia & Africa
tel: +971 (06) 557 80 58 fax: +971 (06) 557 80 59

ISO 13485:2016



314800B

sales@awaretech.com

ChemWell® Fusion

Programmable Open System

Automated ELISA & CLIA Analyzer

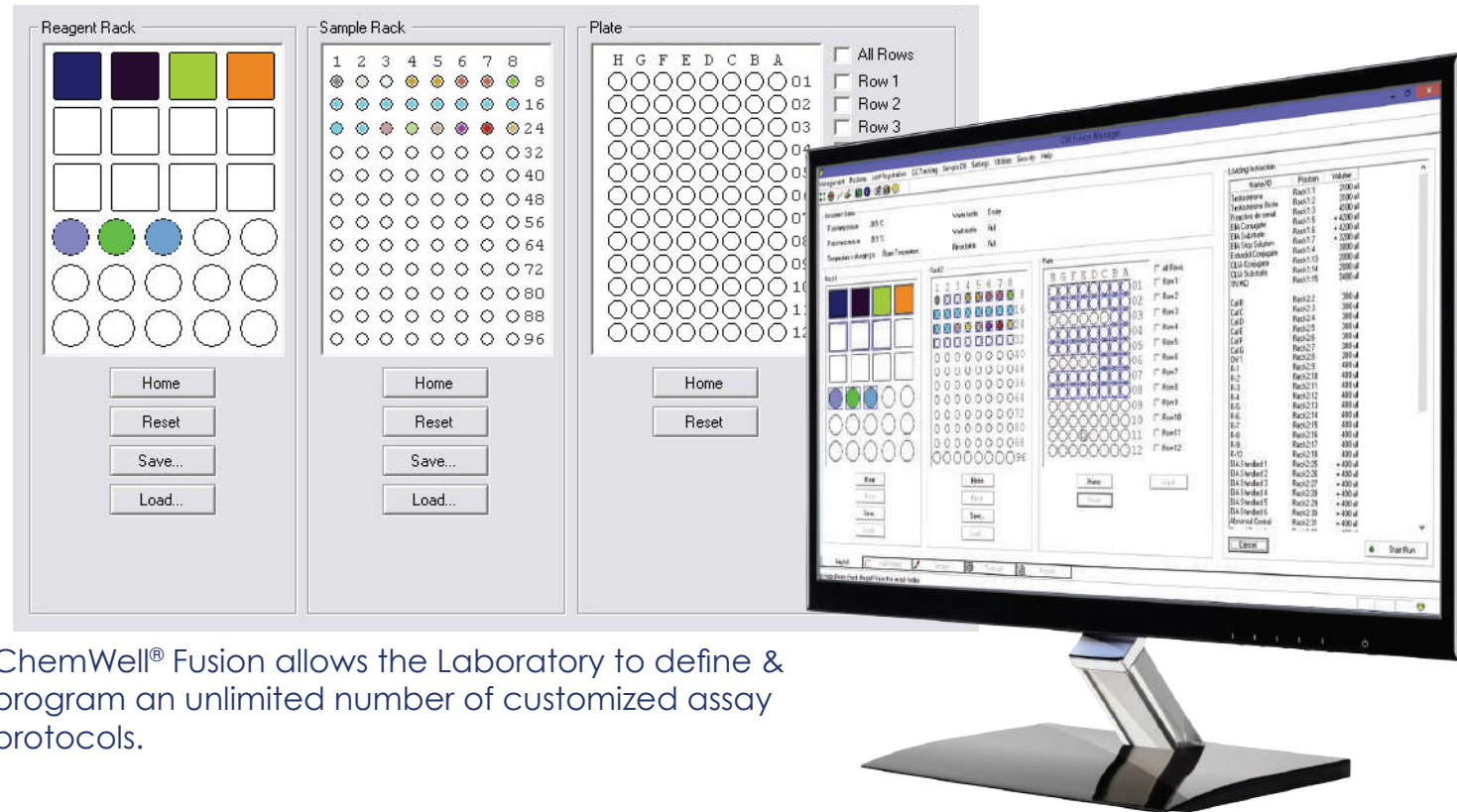


Deliver Results With Confidence

- Accurate results, dependable performance
- Automated analyzer for microwell based ELISA or CLIA
- Versatile open system
- Cost-effective operation

 **AWARENESS**
TECHNOLOGY, INC.

The ChemWell® FUSION Advantage



ChemWell® Fusion allows the Laboratory to define & program an unlimited number of customized assay protocols.

Three easy steps to reliable results

1. Enter or download patient data, request test with calibration and QC options.
2. Load samples and reagents.
3. ChemWell automatically processes the workload, monitoring reagent and sample supply, and presents results for review, printing and storage.



Processes CLIA and ELISA assays on the same microwell plate or run full plates for dedicated testing

- ChemWell Fusion is an open system adaptable to ELISA and glow-type CLIA applications.
- ChemWell Fusion provides pre-dilution options, mixing, variable incubation, plate washing, total pipetting functions, the software times the addition of conjugates, substrates and stop solutions while monitoring sample and reagent volumes as well as other parameters to assure precise, reliable results.
- ChemWell Fusion is a fully automated immunoassay processor with a unique optical system that automatically reads both colorimetric and chemiluminescent assays.
- The instrument holds a 96 microwell plate or up to twelve 8-well strips.
- Each row in a microwell plate can run a different test even if the incubation times, wash cycles, and read modes are different. Smart software avoids timing conflicts.
- Assay applications can be programmed to create and store password protected menu of test protocols.

- Ease of operation through intuitive design
- Integrated precision pipetting & microwell plate washing
- The ability to run both ELISA & CLIA on the same microwell strip plate
- Intelligent software that prevents timing conflicts
- Complete patient database with search and history tracking system
- Flexible reporting options including export to excel or LIS
- Customizable reagent and sample placement offering flexibility
- An open system, with the ability to program any assay Lockout security protection options
- Simplified maintenance

Reagent Rack - Accommodates 27 reagent bottles of various sizes

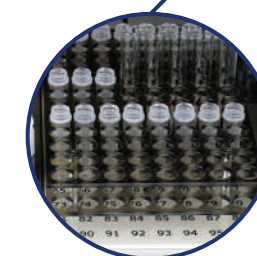
Sample Rack - 96 samples may be loaded

Reaction Chamber - Light-tight microwell plate reaction chamber for processing both CLIA and ELISA assays

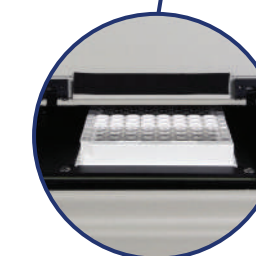
Plate Washer - 8 manifold wash head provides on-board plate washing capability



Reagent Rack



Sample Rack



Reaction Chamber

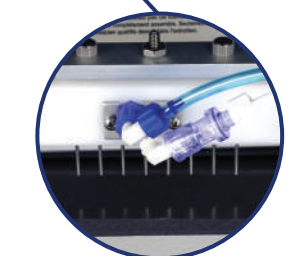


Plate Washer